

# Conservation Conversation

## SWCD DIRECTORS

Jake Hortenstine  
Chairman

Susan Holdeman  
Vice Chairman

Gale Meseke  
Secretary

Elizabeth Heinzmann  
Treasurer

Matt Runge  
Director

## DISTRICT STAFF

Tony Pals, RC  
Karen Sanders, AC

## NRCS STAFF

Mary Ann Hoeffliger, DC  
Scott Smith, SCT

## Annual Tree Sale

By Karen Sanders



Rose of Sharon

Once again, the district has ordered large quantities of trees to sell. We have ordered White Pine, Norway Spruce, Blue Spruce, Red Oak and a Bird and Butterfly Packet. The White Pine and the Norway Spruce make a very good windbreak. They both grow relatively fast and have fairly good survival rate. Now, the Blue Spruce grows a

little slower but they make a beautiful ornamental tree when they mature. The Red Oak is a slow growing hardwood, excellent for shade. Each year we try to have something different so this year we are going to have a Bird & Butterfly Packet. The Bird and Butterfly Packet includes - 10 trees/shrubs of the following varieties - Butterfly Bush, Rosa Rugosa, Trumpet Vine, Rose of Sharon and Liatris Spicata Bulb. Now for the most important part: TREES ARE USUALLY PAID FOR IN THE SPRING EVEN THOUGH THEY ARE ORDERED IN THE FALL!! We take orders until all the trees are gone so call early to make sure that you

### Fayette County SWCD Annual Tree Sale

Name: \_\_\_\_\_

Address: \_\_\_\_\_

City: \_\_\_\_\_

Day-time Phone: \_\_\_\_\_

- \_\_ Bundles (25) White Pine, \$20
- \_\_ Bundles (25) Norway Spruce, \$20
- \_\_ Bundles (10) Blue Spruce, \$12
- \_\_ Northern Red Oak, \$2 each
- \_\_ Bird & Butterfly Packet, \$10 each

Mail form to: Fayette County SWCD  
301 South Third Street  
Vandalia, IL 62471  
618-283-1095 ext. 3

## TABLE OF CONTENTS:

Annual Tree Sale	1
Soil Judging	2
Recycling Update	2
Nelsie's News	3
What a Wonderful Life	3
CP33 Going Fast	3
Snow Recycle Water Molecules	4



Butterfly Bush

get what you want. We will call when the trees arrive, usually around the first part of April. If you have any questions, or are interested in purchasing trees please contact Karen or Tony at the Fayette County SWCD at 618-283-1095 ext. 3 or mail in the attached order form. I have put the order form on this website. Just go to the Tree Sale page and place your order online.

We wish you a Merry Christmas & Happy New Year

## Soil Judging Contest

By Tony Pals



The annual three county Soil Judging Contest was set up for Tuesday, October 6<sup>th</sup>, but

had to be postponed until the next day because of a downpour. We had to round up some pallets to put in the pits to be able to have it on Wednesday. Thanks to Altamont Planter's Farm Center for the pallets. We actually had two contests that day – one started at noon, and the second started at 3:30. Some of the schools couldn't get permission to come during school hours, hence the second contest. Fayette



and Effingham Counties switch off on where the contest is held. This year it was Effingham's turn. We went north of Altamont on the Don Schmidt farm. Like usual, the students had a practice pit and four pits to judge. They had to score each pit on such things as: topsoil depth, texture, structure, color, permeability and percent slope. Then they have to determine the amount of tillage the farmer can do given four different crop rotations to keep the soil loss on that particular soil type and slope below the tolerable soil loss limit. It's really a tough contest and teaches the students a lot about our soil resource and what's necessary to maintain it. This year's winner was South Central.



## Recycling Update

By Karen Sanders



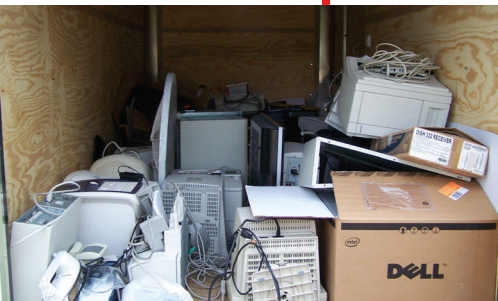
By now most of you are aware of the recycling efforts that we are doing in the county. But, we want to fill you in on what has been going on lately. We are still taking the electronic recycling

every Wednesday from 1:00-5:00 at the USDA Building. We also received word that as of January 1st that there will no longer be a charge to any resident to recycle any e recycling product. The manufacturer's will now have to pay the charge themselves. GREAT NEWS!! Don't you think? This way you can recycle anything that you want and there will not be a charge. We have also begun to holding regular recycling days on the 2nd Saturday of every month from 9:00 a.m. to noon. The first

recycling day was held at the old Twisters building and we filled about 16 Gaylord Boxes. The second recycling day was held on December 12th at the



old Kroger Building and we were able to beat the first recycling day by 3 boxes, we took in 19 Gaylord boxes. There are Gaylord Boxes for paper, magazines, books, tin, cardboard and plastic. We owe a big Thank You to John Sanders and his youth group for all of their hard work at the recycling days. Also, if you have any ideas that could help our committee please call or email me at 618-283-1095 ext. 3 or [karen.sanders@il.nacdnet.net](mailto:karen.sanders@il.nacdnet.net). The more ideas we get the better.



## Nelsie's News

By Nelson Torbeck

Golly, it seems like I haven't written an article for a long time. Guess it's been about four months. The last time it was just before I had surgery on my left hand, but it's all better now. Let's see, let's go back to September; the biggest thing that happened was that Grandson Tim and Amanda got married. It was a beautiful day and a beautiful wedding. It took a long time but Granny and I finally got a granddaughter. They had the wedding at Holy Cross in Vandalia. I even got to wear a flower and got a front row seat. They had a reception and dance at the American Legion Hall. I even danced a couple times, you haven't seen that very often, but this was special. Amanda asked us if we would surprise Tim and play some music for the dance. Well, we retired a few years ago, but we played. I'll have to admit I did enjoy playing with the whole family again. Travis is still working in Greenville; Jaron is still in school in St. Louis, and Jordy's still in school too. He ran cross country again this fall. Why anyone would run cross country I'll never know! He never came in first, but he was in the top ten. Some of his team went to State. Some won rib-



bons and some won trophies. He is playing basketball now. We go to all the home games. Their team isn't the best but they try hard. There aren't many kids in his school. He's been on two all-tournament teams. He did have an exciting play the other night. Seconds to go in the game, behind two points, Jordy got the ball, shoots a long three, the crowd goes quite, the ball goes through the net, they win the game. I don't care what you say that's exciting. Ok, farming. I think this was a year the young farmers will remember for a long time. Wet most of the time - planting and harvest - and dry in between. The beans could have been better, though really not bad. The corn did well! I'll say one thing - the Kruenegel's move and get with the program. They're in and out in a hurry. I'm going to quit on this cold, very windy day. The wind chill is suppose to be zero tonight; that's cold! Here's a question: "Why do we say something is out of whack?" What is "whack"? The old saying "Everything gets easier with practice except getting up in the morning." Merry Christmas and a Happy New Year!

### What a Wonderful World

By George Weiss/ Bob Thiele

I see trees of green, red roses too  
I see them bloom for me and you  
And I think to myself, what a wonderful world

I see skies of blue and clouds of white  
The bright blessed day, the dark sacred night  
And I think to myself, what a wonderful world

The colours of the rainbow, so pretty in the sky  
Are also on the faces of people going by  
I see friends shakin' hands, sayin' "How do you do?"  
They're really saying "I Love you"

I hear babies cryin', I watch them grow  
They'll learn much more than I'll ever know  
And I think to myself, what a wonderful world  
Yes, I think to myself, what a wonderful world



***Merry Christmas from the Board and Staff***

### CP33 Going Fast

By Tony Pals

I just talked to Marcia next door at FSA. She tells me Illinois has about 4000 acres left to go into CP 33 (Quail Buffer). So, if you are at all interested in getting some land in this program, you need to get in and sign up. Remember, this is the program that lets you put in field borders in native grasses and forbs. So you can put a field border up against the fencerow or timber from 30 to 120 feet wide, get about 90% of the cost of getting it established, and an annual payment every year for 10 years. The annual payment is determined by the soils, but is generally around \$130 per acre. If the field border is up against timber or a fencerow, your crop yields are less than in the middle of the field, and you're still putting on the same amount of seed, fertilizer, and herbicide as on the productive part of the field. It has got to give you more net profit for that field with the CP 33. Plus, you are helping provide habitat for an upland game bird that has been on the decline for many years.

## Snow Recycles Water Molecules

Della Moen, Earth Team Volunteer, NRCS/Stephenson Soil and Water Conservation District



The snow falls gently blanketing everything making the landscape of winter a little brighter and life a little more interesting. Snow is tangible evidence that the great hydrological system

that supplies us with clean drinking water is still working.

Evaporation of water from the surface of the earth carries water molecules into the atmosphere. Water molecules form snow as ice crystals when the temperature of the atmosphere is just right and there is a minimum amount of moisture in the air. Some ice crystals are formed when water vapor converts directly to ice. Others when water condenses on small dust particles forming tiny droplets that freeze. Under the right conditions the ice crystals may grow six evenly spaced branches before they descend giving them their six-sided appearance. Crystals can grow in many ways according to conditions as they are formed and as they fall. They may bond together to form larger flakes. Treat yourself to a magnifying glass, examine individual snowflakes on the sleeve of your coat, and take a moment to reflect on how special they are.

We count on snow (and rain) to replenish drinking water and soil moisture. A portion of the snow goes back into the atmosphere without ever reaching the ground. Some is intercepted before it reaches the ground, caught by vegetation, and evaporates or falls to the ground later. Even when snow reaches the ground some



evaporates before melting. If the top layer of the soil is saturated or frozen in ice, the snowmelt runs off. Everything the snow has touched has the potential for polluting the run off when snow melts.

The snow will reach the ground if the ground temperature is at or below freezing.

However, the snow can still reach the ground when the ground temperature is above freezing and conditions are right: "The snowflakes will begin to melt as they reach this warmer temperature layer. The melting creates evaporative cooling which cools the air immediately around the snowflake. This cooling retards the melting."

The water content of snow is more variable than most people realize. "Ten inches of fresh snow can contain as little as 0.10 inches of water up to 4 inches depending on crystal structure, wind speed, temperature, and other factors." The majority of U.S. snows contain half an inch to one inch of water for every ten inches of snow.

Take time to appreciate the snow. Remember that these same water molecules have traveled the earth as part of the water cycle for millions of years in different forms sustaining life on earth. The snow that covers everything renews our drinking water.

Information and quotes are from the National Snow and Ice Data Center (<http://nsidc.org/snow/faq.html>).

Della Moen, Earth Team Volunteer, NRCS/Stephenson Soil and Water Conservation District, an equal opportunity provider and employer, 12/09/09 for publication on 12/12/09 in the *Journal Standard*, Freeport, Illinois) Della can be reached at [info@stephensonswcd.org](mailto:info@stephensonswcd.org).

