

# Conservation Conversation

## **SWCD DIRECTORS**

Jake Hortenstine  
Chairman

Susan Holdeman  
Vice Chairman

Gale Meseke  
Secretary

Elizabeth Heinzmann  
Treasurer

Matt Runge  
Director

## **DISTRICT STAFF**

Tony Pals, RC  
Karen Sanders, AC  
Jamie Elmore, CREP Coor.

## **NRCS STAFF**

Mary Ann Hoeffliger, DC  
Scott Smith, SCT

## **Tree Sale Time Again!!!**

*By Karen Sanders*



It is tree sale time AGAIN! We have ordered large quantities of trees to sell. We will have

White Pine, Norway Spruce, Blue Spruce, Red Oak and White Dogwood.

The White Pine and the Norway Spruce make a very good windbreak. They both grow relatively fast and have a fairly good survival rate. Now, the Blue Spruce grows a little slower but they make a beautiful ornamental tree when they mature. The Red Oak is a slow growing hardwood, excellent for shade.

Every year we add something different to the mix and this year we are going to have the White Dogwood. Now for the most important part: **TREES ARE USUALLY PAID FOR IN THE SPRING EVEN THOUGH THEY ARE ORDERED IN THE FALL!!** You can pay for them when you place your order if you want too, but it is not required.

We take orders until all the trees are gone so call early to make sure that you get what you want. We will call when

the trees arrive, usually around the first week of April. If you have any questions, or are interested in purchasing trees please contact Karen or Tony at the Fayette County SWCD at 618-283-1095 ext. 3 or mail in the attached order form.

I have also put the order form on this website. Just go to the Tree Sale page and to place your order online.

Thank you so much in advance for your order.



## **TABLE OF CONTENTS:**

Tree Sale Time Again	1
Nelsie's News	2
Electronic Recycling Suspended	2
CREP Opens in Fayette County	3
CREP Commonly Asked Questions	4
CREP Commonly Asked Questions	5
Priorities	5
What a Wonderful Life	5
Renewed by Recycling	6

## Fayette County SWCD Annual Tree Sale

Name: \_\_\_\_\_

Address: \_\_\_\_\_

City: \_\_\_\_\_

Day-time Phone: \_\_\_\_\_

- \_\_ Bundles (25) White Pine, \$20
- \_\_ Bundles (25) Norway Spruce, \$20
- \_\_ Bundles (10) Blue Spruce, \$12
- \_\_ Northern Red Oak, \$2 each
- \_\_ White Dogwood, \$2 each

Mail form to: Fayette County SWCD  
301 South Third Street  
Vandalia, IL 62471  
618-283-1095 ext. 3



### Nelsie's News

By Nelson Torbeck

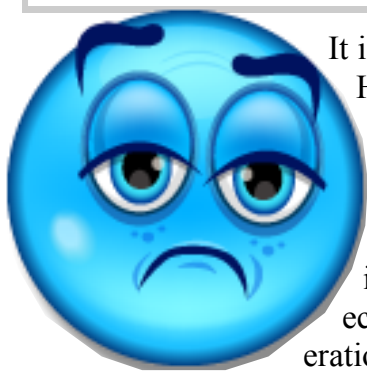
It's time for another newsletter. Seems like the time goes faster and faster all the time. Not much to write about this time. My boys are working all the time, Tim and Travis are working all the time, too. Jaron and Jordy are in school. Here's something you folks don't know, Travis got engaged the other week. They are going to get married next year sometime. Granny and I won't be going to the basketball games in Salem this year. Jordy hurt his knee playing soccer this fall. His folks decided to let it heal up good. He'll go out for basketball next year, he's not happy about that. This will be the first time for a long time that we haven't been at the ball games. Oh' well! The weather is still dry. There sure has been a lot of dirt work going on, waterways, ditches and stuff. If we get some heavy rains it'll wash like the dickens, not much grass got started cause of the dry weather. We've been going to the craft shows here lately, been doing pretty good. I'll have to make a bunch of toys this winter or spring. I don't go out in the shop when it's real cold,



no use wasting the wood. I'll have time later on. We load the truck with our crafts, unload at the show, sit there the day, reload what we don't sell, then unload the crafts at home. But, if we don't sell it we can't make it. We've been to four shows and have one more to go. All the kids are going to be here for Thanksgiving, which will be a houseful with lots of food, and (more important) lots of fun. The Christmas holidays will be here before you know it too. That means more company, more food, and more fun. Hope the weather stays good. Let's see, no varmint report. Oh, by the way, Tim's Amanda got on full time at First National Bank this week - that's good! Here's a question: "Why is it that when you transport something by car it's called a shipment but when you transport something by ship it's called cargo?" How about this for an old saying, "If people were not meant to have a late night snack why is there a light in the refrigerator?" Happy Holidays to all.

### Electronic Recycling Suspended

By Karen Sanders



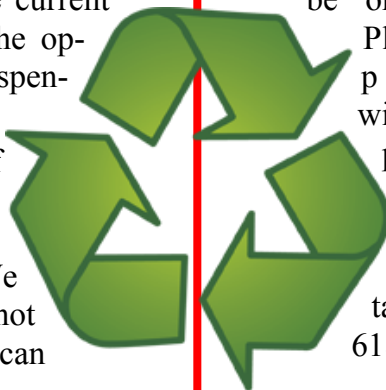
It is sad to report that Lincoln Heritage RC&D is 'Suspending the operation of electronics recycling collection to give us time to reassess the operation in light of the current economics of the operation'. The suspension starts December 1, 2010.

What this means for the residents of Fayette County is that for now the Fayette County SWCD will no longer be accepting electronic items or glass. We are hoping that this suspension will not last very long, but until the RC & D can

find a warehouse to hold the recycling that is gathered and their funding situation gets more stable, everything will be on hold.



Please be patient with us about the suspension and we will let you know as soon as we resume our recycling efforts. If you have any questions please feel free to contact the Fayette County SWCD at 618-283-1095 ext. 3.



## CREP opens in Fayette County

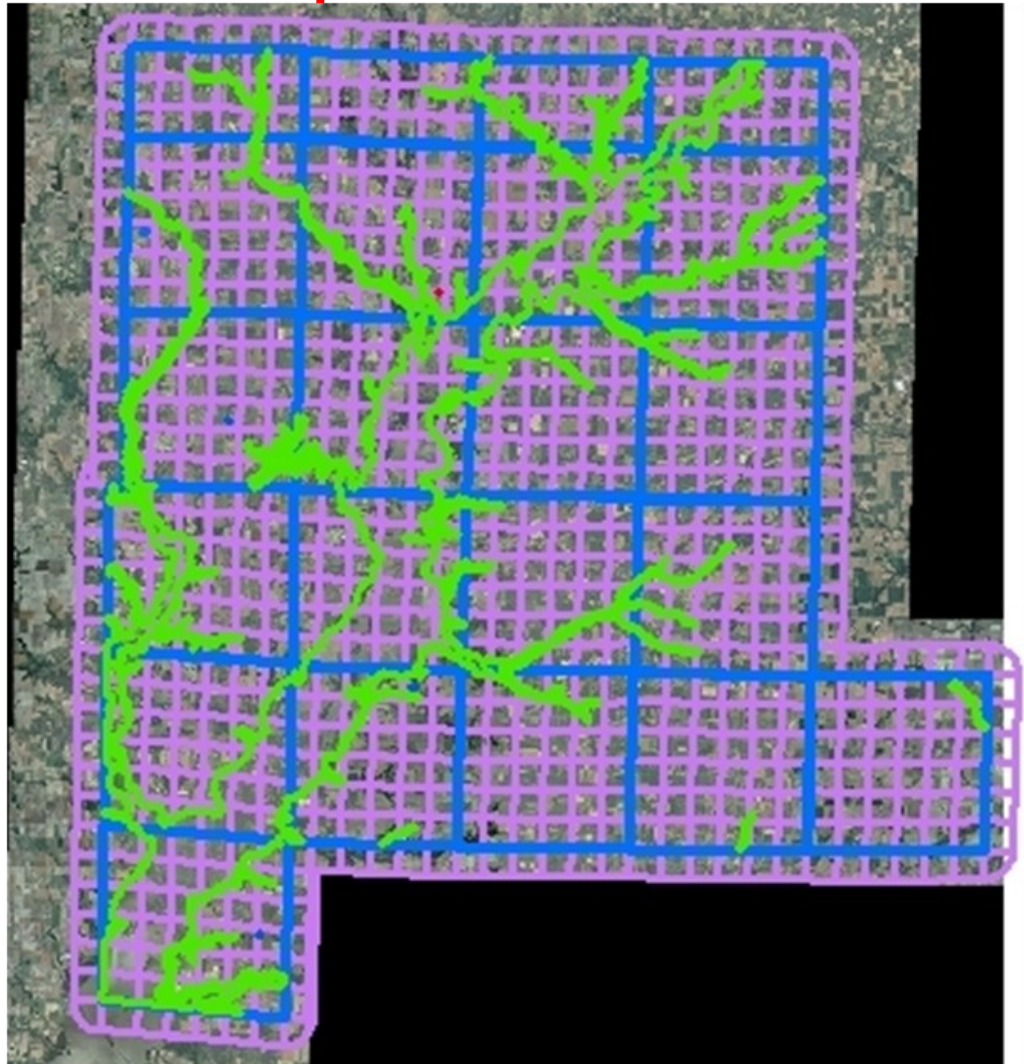
*By Jamie Elmore*

The wait is over for the Conservation Reserve Enhancement Program (CREP) in Fayette County, as sign-up begins December 1<sup>st</sup>. The program has now been extended to include both the Illinois and Kaskaskia River watersheds.

CREP is a voluntary land retirement program that helps agricultural producers protect environmentally sensitive land, decrease erosion, restore wildlife habitat, and safeguard ground and surface water. There are two sides to the program, a federal and a state. The 15-year federal CREP contract is available with FSA, just like any other CRP contract. You then have the option to extend that contract by 15 or 35 years, or permanently, with a state easement available at the SWCD office. The federal contract includes annual payments for the 15 years, with a bonus of 20% or 30%, depending on what you signed up for. There is also a one-time

lump sum payment from the state for the easements, determined by the length of the easement and the soil rental rate for the land signed up. Another benefit is 90% - 100% cost share on establishment of the practice. Practices you will be eligible for will be determined by NRCS and the SWCD will hold the easements.

Implementation at the local level has made the Illinois CREP one of the most successful in the nation. In our area, the prime acreage we hope to enroll in the program is that which lies inside the 100-year floodplain. The photo below shows the floodplain area in Fayette County highlighted in bright green. For sign up or information contact the Fayette County SWCD at 301 South Third Street, Vandalia, or call 618-283-1095 ext. 3.



**Enrollment Begins December 1, 2010**

## CREP Commonly Asked Questions

*By Jamie Elmore*

### What is Conservation Reserve Enhancement Program (CREP)?

CREP is an enhanced version of the USDA Conservation Reserve Program (CRP). The CREP Program is a Federal, State and Local partnership designed to retire frequently flooded and environmentally sensitive cropland in order to achieve restoration and long-term protection of those areas. In Illinois, landowners implement conservation practices in the eligible CREP watersheds to reduce sedimentation and nutrients, improve water quality, and to create and enhance critical habitat for fish and wildlife populations. Enrollment options include a required 14-15 year federal CREP contract, and may be supplemented with a 15-year, 35-year or permanent state conservation easement



rolled in HEL practices

-Signing Incentive Payment (SIP) and Practice Incentive Payment (PIP) on eligible practices

-50% cost share reimbursement on approved conservation practices

-Landowner receives annual rental payments for life of Federal CREP contract

### State:

-50% cost share reimbursement on lands enrolled in State Permanent Easement option; 40% on lands enrolled in 15-year and 35-year State Conservation Easements

-One-time lump sum payment determined by Soil Rental Rate and the State

*(Continued on page 5)*



### Who is eligible?

Producers and private landowners, if they owned or have had an interest in land for a minimum of one year in the

Illinois or Kaskaskia River Watershed, are eligible if the land meets at least one of the following criteria:

- Is in the 100-year floodplain;
- Qualifies as wetlands, wetlands farmed under natural conditions, or prior converted wetlands;
- Is highly erodible land (HEL) with an erodibility index of 8 or greater, adjacent to the 100-year floodplain.

The cropping history requirement is 4 out of 6 years from 2002 to 2007. The eligible area includes all or a part of the 68 counties pictured at right.

### What are the financial incentives?

#### Federal:

-30% bonus rate above the weighted average Soil Rental Rate on lands enrolled in riparian practices or wetland restorations; 20% bonus rate on lands en-



## CREP Commonly Asked Questions

By Jamie Elmore

*(Continued from page 4)*

option selected by landowner (Landowner receives lump sum payment once State Conservation Easement has been executed)

### **What restrictions are there on land enrolled in a State Conservation Easement?**

The land may not go back into row crop production or agricultural uses unless specifically allowed in the Conservation Plan of Operation (CPO). The land may not be developed; no permanent structures or roads may be built on enrolled property. Existing roads can remain if approved by IDNR.

### **What activities are allowed on land enrolled in a State Conservation Easement?**

The landowner retains the right to use enrolled property for recreational purposes, including hunting, fishing, primitive camping, and wildlife watching. Landowners also retain ownership of land, become eligible for reduced property taxes, are allowed to harvest timber with an approved Forest Management Plan, and are allowed to receive any future benefits derived



property for recreational purposes, including hunting, fishing, primitive camping, and wildlife watching. Landowners also retain ownership of land, become eligible for reduced property taxes, are allowed to harvest timber with an approved Forest Management Plan, and are allowed to receive any future benefits derived

### **Priorities**

A hundred years from now it will not matter  
 what your bank account was,  
 the sort of house you lived in  
 or the kind of car you drove...

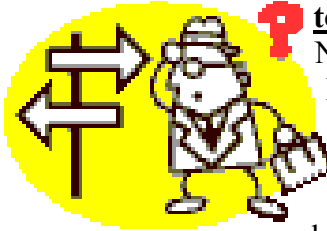
but the world may be different  
 because you were important  
 in the life of a child.

PLEASE remember your  
 priorities this Holiday Season



from restoration activities such as carbon sequestration.

### **Does a State Conservation Easement grant access to the public?**



No, the State Conservation Easements do not allow public access, this is guaranteed in the CREP Conservation Easement. However, the landowner may grant access or participate in the Illinois Recreational Access Program. State agency personnel and SWCD staff have the authority to access lands enrolled in CREP to perform normal duties.

*More than 90% of land in Illinois is privately owned. Programs, like CREP, are essential to addressing environmental issues of both local and national significance.*

For more information, go to <http://www.dnr.illinois.gov/conservation/CREP>

### **What a Wonderful World**

*By George Weiss/ Bob Thiele*

I see trees of green, red roses too  
 I see them bloom for me and you  
 And I think to myself, what a wonderful world

I see skies of blue and clouds of white  
 The bright blessed day, the dark sacred night  
 And I think to myself, what a wonderful world

The colours of the rainbow, so pretty in the sky

Are also on the faces of people going by  
 I see friends shakin' hands, sayin' "How do you do?"  
 They're really saying "I Love you"

I hear babies cryin', I watch them grow  
 They'll learn much more than I'll ever know  
 And I think to myself, what a wonderful world  
 Yes, I think to myself, what a wonderful world

***Merry Christmas from the Board and Staff***



## Renewed by Recycling

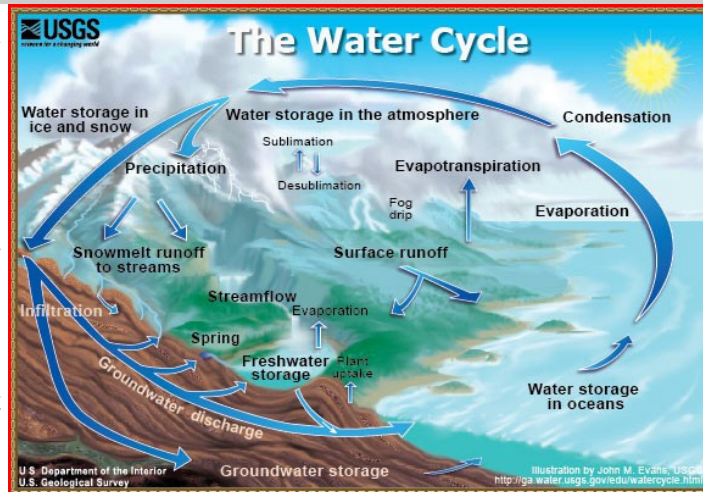
*Della Moen, Earth Team Volunteer, NRCS/Stephenson Soil and Water Conservation District*

When we talk about the weather we are talking about “renewing” groundwater. The fact is that all of our freshwater resources, surface water and groundwater, are replenished by precipitation.

Science tells us that there is the same amount of water on earth today as there was when the Earth was formed three billion years ago. The water from your faucet contains molecules of water, each made of two atoms of hydrogen and one atom of oxygen -- possibly molecules from a dinosaur or from the last ice age.

Nearly 97% of this ancient supply of water is salty. Only three percent of all the water on earth is fresh water. And, of the fresh water, only one percent is not frozen in glaciers and polar caps and is available for preserving life and for all the uses that humans can devise.

Water is being continuously recycled to renew the freshwater supply in a natural process known as the hydrologic cycle often referred to as the water cycle. Water evaporates from the oceans and many other sources entering the atmosphere as water vapor. Salt and other impurities are left behind. The water vapor forms droplets, gathers in clouds, and is moved around the earth in great weather systems powered with energy from the sun. The clouds release the water molecules back to the earth as precipitation. Some of the water never reaches the



ground, some is returned to the atmosphere by living things, some runs off over the surface of the earth, and some soaks into (infiltrates) the ground and flows underground to a surface water body. Evaporation continues the cycle.

All of these water molecules are part of a complicated interconnected system. Eventually the freshwater connects to the oceans. Evaporation takes place at many points in this system and the cycle continues renewing our freshwater supply both above ground and as groundwater.

Groundwater does not flow in rivers or lakes below the surface but flows through soil, sand, gravel, and porous rock to a surface water body as it is being renewed with freshwater from precipitation. Groundwater flows more quickly through some materials such as sand and very slowly through others such as clay. The water table indicates the level below which the ground is saturated with water.

Water is a universal solvent. Water often carries with it some of whatever is in its path. Groundwater and surface water can be withdrawn faster than they are renewed. Under certain conditions groundwater and surface water mingle with each other. They can be polluted from a single source or multiple sources.

Freshwater, including groundwater, is renewed around the earth daily. Evaporation continuously separates water molecules from impurities. Water molecules are always on the move. Water molecules demonstrate the ultimate in recycling.

